

Fairfield County Genealogy Society

Research Library

Research Log

#18
#3

Member: Yes (priority), No

Position in-line: _____

Surname(s): CROSBY

Target: _____

Started: _____

Ready to File

Completed: 12/14/16

Start research using Request, Family Group & Pedigree Sheets
Check off each item as research is completed

Reliz

- **BookCat (Online Card Catalog)**
 - **Key in surname being researched**
 - FB = Family Books
 - FF = Family Files
 - VF = Vertical Files
 - VF Church = Vertical Files labeled Churches
 - VF Fairfield = Vertical Files labeled Fairfield
 - VF Plats = Vertical Files labeled Plats
 - VF Wills = Vertical Files labeled Wills
- **Computer with Large TV Screen**
 - **Check ICON labeled Research Room**
 - African American Folder
 - Books Folder
 - CDs Folder
 - Church Cemeteries Folder
 - Family Books Section Folder
 - Family Researched Files Folder (also check Master List Spreadsheet)
 - Funeral Homes Folder
 - Maps, Map Information Folders
 - Obits Folder
 - Plats Folder
 - Wills Folder
 - **Check Online Research Sources Folder**
 - Other web resources available, like USC Libraries, etc.
- **Main Room – Southwest Corner**
 - Local Church History & Denominational Church History
 - Deeds
 - Wills
 - Equity Court
 - Cemeteries
 - Birth Scrapbook
 - Marriage Notices & Scrapbook
 - Death Notices & Scrapbook

Untitled

Margaret Rebecca Crosby

Fairfield County Genealogy Society
Dec 14, 2016

Thanks for bringing this to our attention. I have removed the information on the tree.
I checked the source and could not find at rootsweb.com any information to support the 1909 death dates.
I also looked over your tree and you do have documentation to support your information for this family.

Fairfield County Genealogy Society
Dec 08, 2016

Hello, I am sorry, but you will need to send an email to fairfieldgenealogy@truvista.net.
We respond only to personal email addresses, not site generated messages.

beachridgestable
Dec 07, 2016

thank you.

Fairfield County Genealogy Society
Dec 07, 2016

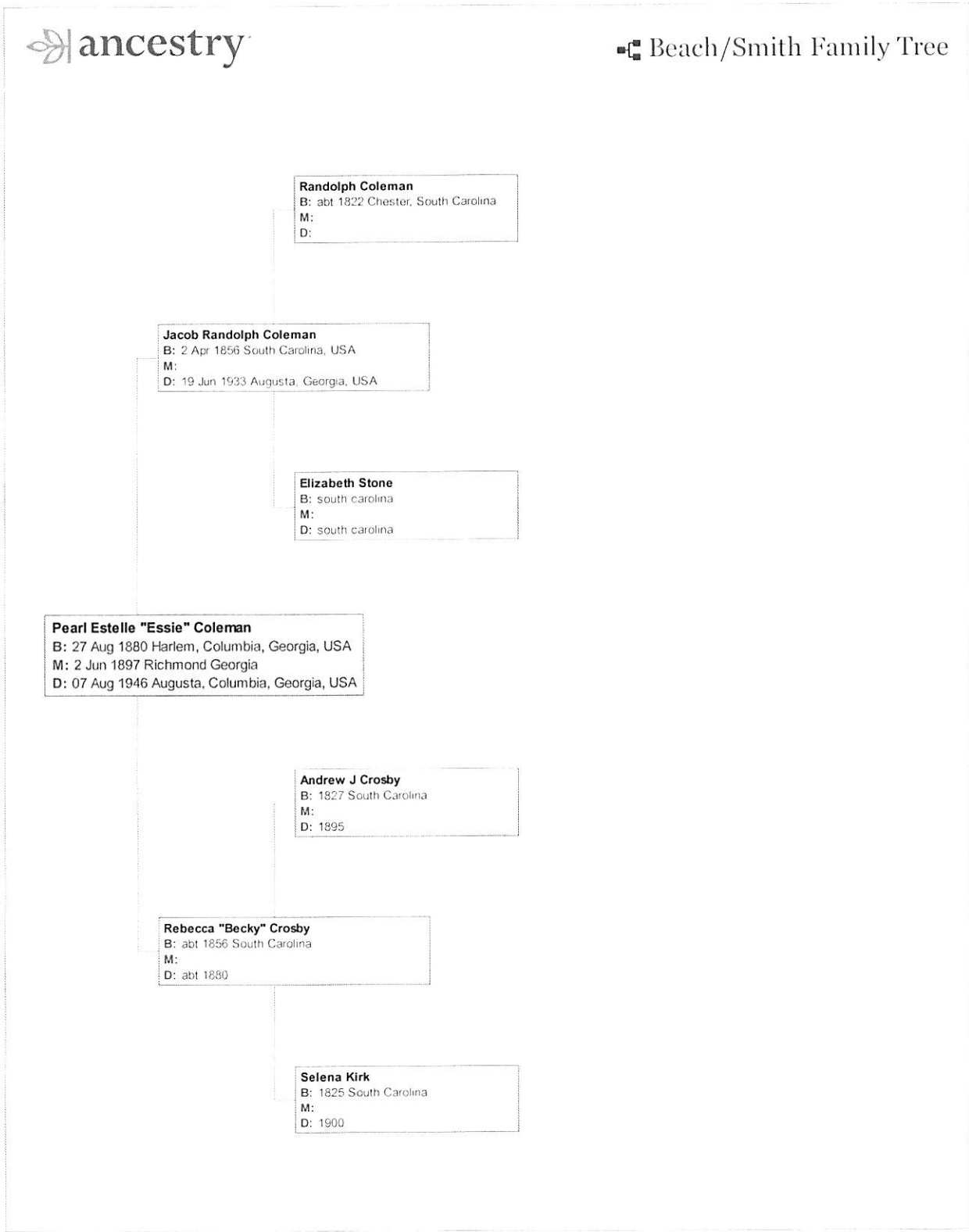
Hello,
Please send your request to fairfieldgenealogy@truvista.net.

beachridgestable
Aug 18, 2016

I had noticed you had a specific date for her death in 1909. What source are you using?
Her Daughter Essie, is our great grandmother (pearl estelle coleman).
Any information would be greatly appreciated!
look forward to hearing from you



Beach/Smith Family Tree



Randolph Coleman
B: abt 1822 Chester, South Carolina
M:
D:

Jacob Randolph Coleman
B: 2 Apr 1856 South Carolina, USA
M:
D: 19 Jun 1933 Augusta, Georgia, USA

Elizabeth Stone
B: south carolina
M:
D: south carolina

Pearl Estelle "Essie" Coleman
B: 27 Aug 1880 Harlem, Columbia, Georgia, USA
M: 2 Jun 1897 Richmond Georgia
D: 07 Aug 1946 Augusta, Columbia, Georgia, USA

Andrew J Crosby
B: 1827 South Carolina
M:
D: 1895

Rebecca "Becky" Crosby
B: abt 1856 South Carolina
M:
D: abt 1880

Selena Kirk
B: 1825 South Carolina
M:
D: 1900

1900 United States Federal Census for Pearl E Coleman

South Carolina > Laurens > Waterloo > District 0062

SAVE

Household #	Name	Relationship	Sex	Age	Birth Date	Birth Place	Marital Status	Occupation	Education	Other
53	— Cleo	Daughter	F	10	Dec 1886	South Carolina	Single		at school	5' 7" 70 lbs
54	104-111 Coleman Amanda W	Wife	F	40	Dec 1859	South Carolina	Married		at school	70 lbs 70 lbs
55	104-111 Carter Linda P. 4	Head	M	15	Jan 1865	South Carolina	Single		at school	70 lbs 70 lbs
56	— Virginia	Daughter	F	13	May 1892	South Carolina	Single			0
57	— Bertie	Daughter	F	11	Apr 1894	South Carolina	Single			
58	— Alice	Daughter	F	11	May 1894	South Carolina	Single			
59	112-112 Coleman James P. 3	Head	M	40	Feb 1870	South Carolina	Married		Farmer	0 70 lbs 70 lbs 0 110 lbs 110 lbs
60	— Mary E	Wife	F	40	Mar 1872	South Carolina	Married			70 lbs 70 lbs
61	— Fred J	Son	M	10	Nov 1897	South Carolina	Single			
62	117-117 Coleman James P. 5	Head	M	40	Jun 1862	South Carolina	Married		Farmer	0 70 lbs 70 lbs 0 110 lbs 109 lbs
63	— Alice V	Wife	F	40	Mar 1869	South Carolina	Married			70 lbs 70 lbs
64	— Pearl E	Daughter	F	10	Apr 1890	South Carolina	Single		at school	6 70 lbs 70 lbs
65	— Ina	Daughter	F	10	Jun 1895	South Carolina	Single			
66	— Thomas	Son	M	10	Aug 1897	South Carolina	Single			70 lbs 70 lbs 70 lbs
67	112-112 Northman John	Head	M	43	Mar 1857	South Carolina	Married		Farmer	0 70 lbs 70 lbs 70 lbs 70 lbs
68	— Corie	Wife	F	43	Dec 1859	South Carolina	Married			70 lbs 70 lbs
69	117-117 Coleman William P. 9	Head	M	40	Oct 1841	South Carolina	Married		Farmer	0 70 lbs 70 lbs 70 lbs 113 lbs
70	— Ananda E	Wife	F	40	Mar 1861	South Carolina	Married			6 70 lbs 70 lbs
71	— Duke E	Son	M	40	Aug 1860	South Carolina	Married		Farmer	6 70 lbs 70 lbs
72	— Rial W	Son	M	10	Apr 1888	South Carolina	Single		Farmer	6 70 lbs 70 lbs
73	— Ruth D	Son	M	10	Mar 1897	South Carolina	Single		at school	6
74	— Fita D	Son	M	10	Aug 1892	South Carolina	Single		at school	6
75	— Larry	Son	M	10	Jun 1894	South Carolina	Single			
76	— Harry	Son	M	10	Jun 1894	South Carolina	Single			
77	— Nettie J	Daughter	F	10	Jun 1898	South Carolina	Single			
78	114-114 Richardson Alice	Head	M	43	Nov 1858	South Carolina	Married		Farmer	70 lbs 70 lbs 70 lbs 114 lbs
79	— Richardson John	Wife	F	41	Mar 1857	South Carolina	Married			70 lbs 70 lbs
80	— Henderson C	Nephew	M	13	Dec 1889	South Carolina	Single		Farmer	2 70 lbs 70 lbs
81	118-117 McDaniel J. P. 3	Head	M	43	Dec 1857	South Carolina	Married		Farmer	70 lbs 70 lbs 70 lbs 114 lbs
82	— Julia	Wife	F	43	Jan 1860	South Carolina	Married			70 lbs 70 lbs
83	— John M	Son	M	13	Jan 1878	South Carolina	Single			70 lbs 70 lbs
84	— Robert	Son	M	13	May 1897	South Carolina	Single			70 lbs 70 lbs
85	— Robert	Son	M	13	Apr 1897	South Carolina	Single		Farmer	70 lbs 70 lbs



Pearl E Coleman in the 1900 United States Federal Census

Name: Pearl E Coleman
 Age: 10
 Birth Date: Jan 1890
 Birthplace: South Carolina
 Home in 1900: Waterloo, Laurens, South Carolina
 Race: White
 Gender: Female
 Relation to Head of House: Daughter
 Marital Status: Single
 Father's name: Thomas Coleman
 Father's Birthplace: South Carolina
 Mother's name: Aline V Coleman
 Mother's Birthplace: South Carolina
 Occupation: [View on Image](#)

Household Members:	Name	Age
	Thomas Coleman	33
	Aline V Coleman	31
	Pearl E Coleman	10
	Ina Coleman	5
	Thomas Coleman	2

Source Citation

Year: 1900; Census Place: Waterloo, Laurens, South Carolina; Roll: 1534; Page: 7B; Enumeration District: 0062; FHL microfilm: 1241534

Source Information

Ancestry.com. 1900 United States Federal Census [database on-line]. Provo, UT, USA: Ancestry.com Operations Inc. 2004.

Original data: United States of America, Bureau of the Census. *Twelfth Census of the United States, 1900*. Washington, D.C.: National Archives and Records Administration, 1900. T623, 1854 rolls.

Description

This database is an index to individuals enumerated in the 1900 United States Federal Census, the Twelfth Census of the United States. Census takers recorded many details including each person's name, address, relationship to the head of household, color or race, sex, month and year of birth, age at last birthday, marital status, number of years married, the total number of children born of the mother, the number of those children living, birthplace, birthplace of father and mother, if the individual was foreign born, the year of immigration and the number of years in the United States, the citizenship status of foreign-born individuals over age twenty-one, occupation, and more. Additionally, the names of those listed on the population schedule are linked to actual images of the 1900 Federal Census. [Learn more...](#)

© 2016, Ancestry.com



Pearl Coleman in the 1910 United States Federal Census

Name: Pearl Coleman
 Age in 1910: 20
 Birth Year: abt 1890
 Birthplace: South Carolina
 Home in 1910: Waterloo, Laurens, South Carolina
 Race: White
 Gender: Female
 Relation to Head of House: Daughter
 Marital Status: Single
 Father's name: T J Coleman
 Father's Birthplace: South Carolina
 Mother's name: Ollive Coleman
 Mother's Birthplace: South Carolina
 Native Tongue: English
 Occupation: Teacher
 Industry: School
 Employer, Employee or Other: Wage Earner
 Attended School: No
 Able to Read: Yes
 Able to Write: Yes
 Out of Work: N
 Number of weeks out of work: 0
 Neighbors: [View others on page](#)

Household Members:	Name	Age
	T J Coleman	48
	Ollive Coleman	41
	Pearl Coleman	20
	Ina Coleman	15
	Thomas Coleman	12
	John Coleman	9
	Hellen Coleman	[4]
		7

Source Citation

Year: 1910; Census Place: Waterloo, Laurens, South Carolina; Roll: T624_1464; Page: 12A; Enumeration District: 0064; FHL microfilm: 1375477

Source Information

Ancestry.com. 1910 United States Federal Census [database on-line]. Provo, UT, USA: Ancestry.com Operations Inc, 2006.

Original data: Thirteenth Census of the United States, 1910 (NARA microfilm publication T624, 1,178 rolls). Records of the Bureau of the Census, Record

Thomas J Coleman

Birth: Jun. 7, 1862
Death: Mar. 16, 1934

Family links:

Spouse:

Olive Viola *Benjamin* Coleman (1869 - 1931)

Burial:

Beaverdam Baptist Church Cemetery
Mountville
Laurens County
South Carolina, USA

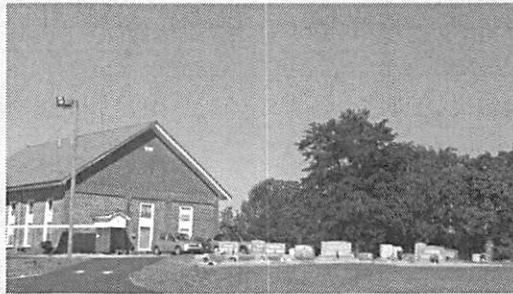
Created by: gerald

Record added: Apr 01, 2012

Find A Grave Memorial# 87832529



Added by: gerald



Cemetery Photo

Added by: Paul, Karen, & Katherine



- S .OBryant

Added: Dec. 14, 2012

Olive Viola Benjamin Coleman

Birth: Mar. 17, 1869
Death: Apr. 18, 1931

Family links:

Spouse:

Thomas J Coleman (1862 - 1934)*

*Calculated relationship

Burial:

Beaverdam Baptist Church Cemetery

Mountville

Laurens County

South Carolina, USA

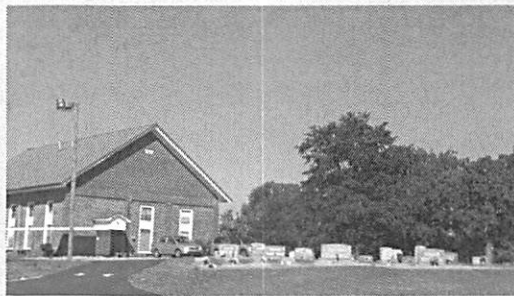
Created by: gerald

Record added: Apr 01, 2012

Find A Grave Memorial# 87832142



Added by: gerald



Cemetery Photo

Added by: Paul, Karen, & Katherine



- S.OBryant

Added: Dec. 14, 2012

1910 U.S. Census

STATE *South Carolina* COUNTY *Richland* TOWNSHIP OR OTHER DIVISION OF COUNTY *Walton Academy* (1) MAY 9 (1)

DEPARTMENT OF COMMERCE AND LABOR BUREAU OF THE CENSUS THIRTEENTH CENSUS OF THE UNITED STATES: 1910 POPULATION

SUPERVISOR'S DISTRICT NO. *14* SHEET NO. *13* A
 ENUMERATOR'S DISTRICT NO. *104* WARD OR CITY *Walton Academy* 7980

NAME OF INSTITUTION *Walton Academy* ESTABLISHED BY ME IN THE *86* DAY OF *April* 1910

LINE NO.	NAME OF INSTITUTION	YEAR	RELIGION	ETHNIC OR RACE	SEX	AGE	MARRIAGE	EDUCATION	SUPPORT	OCCUPATION	REMARKS	POPULATION		TOTAL
												MALE	FEMALE	
1	<i>James</i>	<i>18 6 8</i>	<i>English</i>	<i>W</i>	<i>M</i>	<i>34</i>	<i>1</i>	<i>12</i>	<i>Teacher</i>	<i>None</i>	<i>None</i>	<i>1</i>	<i>1</i>	<i>1</i>
2	<i>Robert</i>	<i>18 5 2</i>	<i>English</i>	<i>W</i>	<i>M</i>	<i>35</i>	<i>1</i>	<i>12</i>	<i>Teacher</i>	<i>None</i>	<i>None</i>	<i>1</i>	<i>1</i>	<i>1</i>
3	<i>John</i>	<i>18 4 2</i>	<i>English</i>	<i>W</i>	<i>M</i>	<i>36</i>	<i>1</i>	<i>12</i>	<i>Teacher</i>	<i>None</i>	<i>None</i>	<i>1</i>	<i>1</i>	<i>1</i>
4	<i>John</i>	<i>18 3 2</i>	<i>English</i>	<i>W</i>	<i>M</i>	<i>37</i>	<i>1</i>	<i>12</i>	<i>Teacher</i>	<i>None</i>	<i>None</i>	<i>1</i>	<i>1</i>	<i>1</i>
5	<i>John</i>	<i>18 2 2</i>	<i>English</i>	<i>W</i>	<i>M</i>	<i>38</i>	<i>1</i>	<i>12</i>	<i>Teacher</i>	<i>None</i>	<i>None</i>	<i>1</i>	<i>1</i>	<i>1</i>
6	<i>John</i>	<i>18 1 2</i>	<i>English</i>	<i>W</i>	<i>M</i>	<i>39</i>	<i>1</i>	<i>12</i>	<i>Teacher</i>	<i>None</i>	<i>None</i>	<i>1</i>	<i>1</i>	<i>1</i>
7	<i>John</i>	<i>18 0 2</i>	<i>English</i>	<i>W</i>	<i>M</i>	<i>40</i>	<i>1</i>	<i>12</i>	<i>Teacher</i>	<i>None</i>	<i>None</i>	<i>1</i>	<i>1</i>	<i>1</i>
8	<i>John</i>	<i>17 9 2</i>	<i>English</i>	<i>W</i>	<i>M</i>	<i>41</i>	<i>1</i>	<i>12</i>	<i>Teacher</i>	<i>None</i>	<i>None</i>	<i>1</i>	<i>1</i>	<i>1</i>
9	<i>John</i>	<i>17 8 2</i>	<i>English</i>	<i>W</i>	<i>M</i>	<i>42</i>	<i>1</i>	<i>12</i>	<i>Teacher</i>	<i>None</i>	<i>None</i>	<i>1</i>	<i>1</i>	<i>1</i>
10	<i>John</i>	<i>17 7 2</i>	<i>English</i>	<i>W</i>	<i>M</i>	<i>43</i>	<i>1</i>	<i>12</i>	<i>Teacher</i>	<i>None</i>	<i>None</i>	<i>1</i>	<i>1</i>	<i>1</i>
11	<i>John</i>	<i>17 6 2</i>	<i>English</i>	<i>W</i>	<i>M</i>	<i>44</i>	<i>1</i>	<i>12</i>	<i>Teacher</i>	<i>None</i>	<i>None</i>	<i>1</i>	<i>1</i>	<i>1</i>
12	<i>John</i>	<i>17 5 2</i>	<i>English</i>	<i>W</i>	<i>M</i>	<i>45</i>	<i>1</i>	<i>12</i>	<i>Teacher</i>	<i>None</i>	<i>None</i>	<i>1</i>	<i>1</i>	<i>1</i>
13	<i>John</i>	<i>17 4 2</i>	<i>English</i>	<i>W</i>	<i>M</i>	<i>46</i>	<i>1</i>	<i>12</i>	<i>Teacher</i>	<i>None</i>	<i>None</i>	<i>1</i>	<i>1</i>	<i>1</i>
14	<i>John</i>	<i>17 3 2</i>	<i>English</i>	<i>W</i>	<i>M</i>	<i>47</i>	<i>1</i>	<i>12</i>	<i>Teacher</i>	<i>None</i>	<i>None</i>	<i>1</i>	<i>1</i>	<i>1</i>
15	<i>John</i>	<i>17 2 2</i>	<i>English</i>	<i>W</i>	<i>M</i>	<i>48</i>	<i>1</i>	<i>12</i>	<i>Teacher</i>	<i>None</i>	<i>None</i>	<i>1</i>	<i>1</i>	<i>1</i>
16	<i>John</i>	<i>17 1 2</i>	<i>English</i>	<i>W</i>	<i>M</i>	<i>49</i>	<i>1</i>	<i>12</i>	<i>Teacher</i>	<i>None</i>	<i>None</i>	<i>1</i>	<i>1</i>	<i>1</i>
17	<i>John</i>	<i>17 0 2</i>	<i>English</i>	<i>W</i>	<i>M</i>	<i>50</i>	<i>1</i>	<i>12</i>	<i>Teacher</i>	<i>None</i>	<i>None</i>	<i>1</i>	<i>1</i>	<i>1</i>
18	<i>John</i>	<i>16 9 2</i>	<i>English</i>	<i>W</i>	<i>M</i>	<i>51</i>	<i>1</i>	<i>12</i>	<i>Teacher</i>	<i>None</i>	<i>None</i>	<i>1</i>	<i>1</i>	<i>1</i>
19	<i>John</i>	<i>16 8 2</i>	<i>English</i>	<i>W</i>	<i>M</i>	<i>52</i>	<i>1</i>	<i>12</i>	<i>Teacher</i>	<i>None</i>	<i>None</i>	<i>1</i>	<i>1</i>	<i>1</i>
20	<i>John</i>	<i>16 7 2</i>	<i>English</i>	<i>W</i>	<i>M</i>	<i>53</i>	<i>1</i>	<i>12</i>	<i>Teacher</i>	<i>None</i>	<i>None</i>	<i>1</i>	<i>1</i>	<i>1</i>
21	<i>John</i>	<i>16 6 2</i>	<i>English</i>	<i>W</i>	<i>M</i>	<i>54</i>	<i>1</i>	<i>12</i>	<i>Teacher</i>	<i>None</i>	<i>None</i>	<i>1</i>	<i>1</i>	<i>1</i>
22	<i>John</i>	<i>16 5 2</i>	<i>English</i>	<i>W</i>	<i>M</i>	<i>55</i>	<i>1</i>	<i>12</i>	<i>Teacher</i>	<i>None</i>	<i>None</i>	<i>1</i>	<i>1</i>	<i>1</i>
23	<i>John</i>	<i>16 4 2</i>	<i>English</i>	<i>W</i>	<i>M</i>	<i>56</i>	<i>1</i>	<i>12</i>	<i>Teacher</i>	<i>None</i>	<i>None</i>	<i>1</i>	<i>1</i>	<i>1</i>
24	<i>John</i>	<i>16 3 2</i>	<i>English</i>	<i>W</i>	<i>M</i>	<i>57</i>	<i>1</i>	<i>12</i>	<i>Teacher</i>	<i>None</i>	<i>None</i>	<i>1</i>	<i>1</i>	<i>1</i>
25	<i>John</i>	<i>16 2 2</i>	<i>English</i>	<i>W</i>	<i>M</i>	<i>58</i>	<i>1</i>	<i>12</i>	<i>Teacher</i>	<i>None</i>	<i>None</i>	<i>1</i>	<i>1</i>	<i>1</i>
26	<i>John</i>	<i>16 1 2</i>	<i>English</i>	<i>W</i>	<i>M</i>	<i>59</i>	<i>1</i>	<i>12</i>	<i>Teacher</i>	<i>None</i>	<i>None</i>	<i>1</i>	<i>1</i>	<i>1</i>
27	<i>John</i>	<i>16 0 2</i>	<i>English</i>	<i>W</i>	<i>M</i>	<i>60</i>	<i>1</i>	<i>12</i>	<i>Teacher</i>	<i>None</i>	<i>None</i>	<i>1</i>	<i>1</i>	<i>1</i>
28	<i>John</i>	<i>15 9 2</i>	<i>English</i>	<i>W</i>	<i>M</i>	<i>61</i>	<i>1</i>	<i>12</i>	<i>Teacher</i>	<i>None</i>	<i>None</i>	<i>1</i>	<i>1</i>	<i>1</i>
29	<i>John</i>	<i>15 8 2</i>	<i>English</i>	<i>W</i>	<i>M</i>	<i>62</i>	<i>1</i>	<i>12</i>	<i>Teacher</i>	<i>None</i>	<i>None</i>	<i>1</i>	<i>1</i>	<i>1</i>
30	<i>John</i>	<i>15 7 2</i>	<i>English</i>	<i>W</i>	<i>M</i>	<i>63</i>	<i>1</i>	<i>12</i>	<i>Teacher</i>	<i>None</i>	<i>None</i>	<i>1</i>	<i>1</i>	<i>1</i>

Genealogy Resource Library

From: Ancestry [notifications@ancestry.com]
Sent: Wednesday, August 17, 2016 9:08 PM
To: fairfieldgenealogy@truvista.net
Subject: New message from beachridgestable on Ancestry.com: Margaret Rebecca Crosby

1 of 1 message(s) from beachridgestable: Margaret Rebecca Crosby



beachridgestable

Margaret Rebecca Crosby

M. Coleman

27 Jan.

I had noticed you had a specific date for her death in 1909. What source are you using? Her Daughter Essie, is our great grandmother (pearl estelle coleman) . Any information would be greatly appreciated! look forward to hearing from you

[View message](#)

Son Charlie P. Coleman d 27 JAN 1909
DAU Essie d 27 JAN 1909

This is a notification of a message you received from another Ancestry member. Ancestry is not responsible for the contents of this message. To change your preferences about how other members can contact you and what they can contact you about, please [click here](#). If you wish to block future messages from this person, please [click here](#). If you would like to report abuse of the system, [click here](#).

Contact Us

Online Help

Please add notifications@ancestry.com to your address book to make sure you don't miss an email.

You are receiving this email because you have registered with Ancestry using the email address fairfieldgenealogy@truvista.net.

Your privacy is important to us. View our **Privacy Statement** for more information.

Use of Ancestry.com is subject to our **Terms and Conditions**.

© 2016 ANCESTRY.COM

Ancestry.com Operations Inc. 1300 W Traverse Parkway, Lehi, UT 84043, USA